

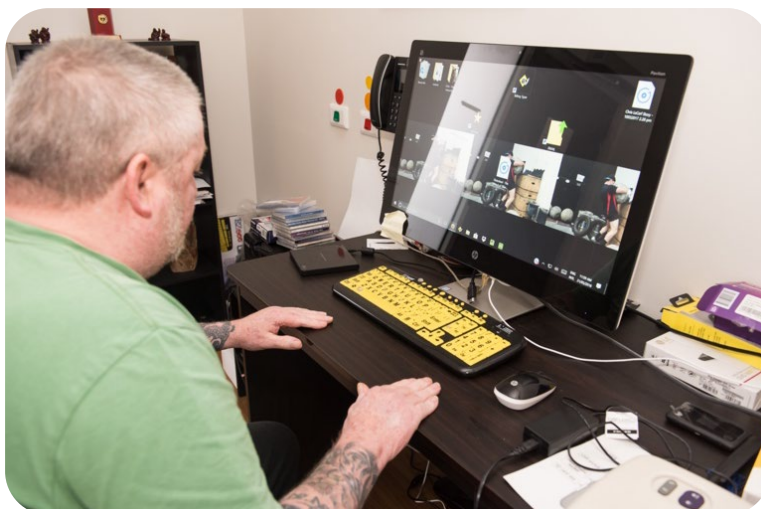
# User Experience Questionnaire

## What information will I gain from the User Experience Questionnaire?

The User Experience Questionnaire (UEQ) measure a person's experience of assistive technology, that are considered 'interactive products', for example software, phone apps. There are two versions of the UEQ, which are available in 36 languages. The standard format has 26-items, and for some special application scenarios there is a short version (UEQ-S) with just 8 items. Each item is rated using a 7-point scale, with values ranging from -3 (horribly bad) to +3 (extremely good), and 0 indicating a neutral response.

The UEQ measures usability and user experience outcomes across 6 scales:

1. Attractiveness
2. Efficiency
3. Perspicuity (ease of use)
4. Dependability
5. Novelty
6. Stimulation.



## How long does it take to administer the measure?

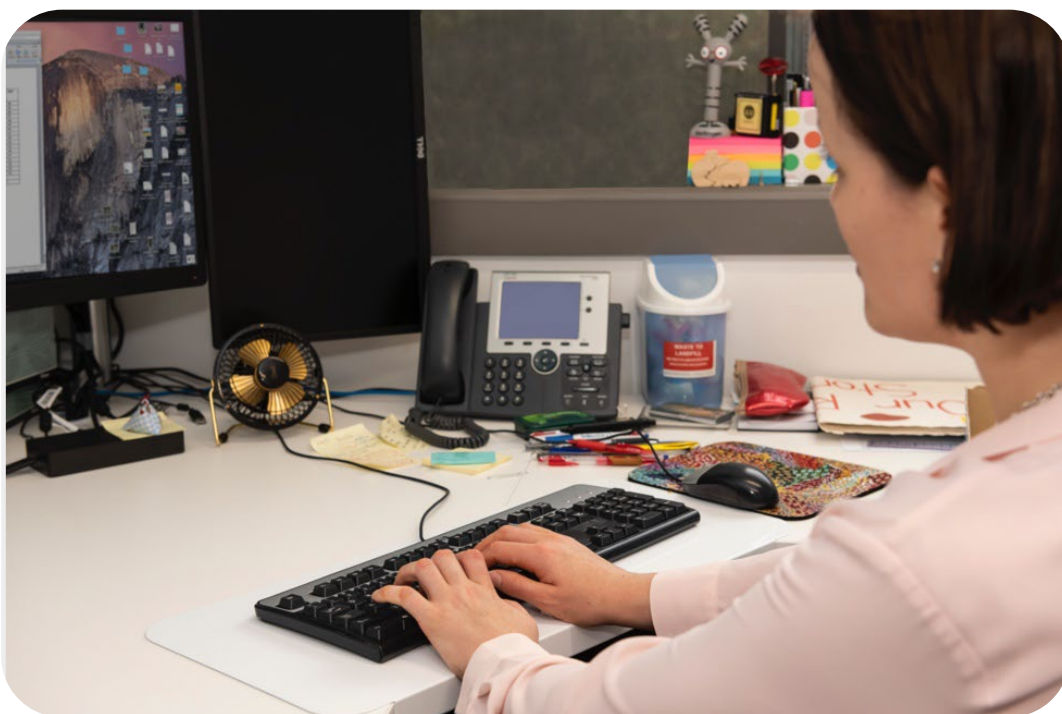
The UEQ takes around 5-10 minutes to complete. Depending on the support needs of the person, the UEQ can be completed independently by the person, or it can be completed with the person as an interview or conversation.

## How do I report or score the measure?

There is a data analysis tool you can use for both the UEQ and UEQ-S. [You can download the data analysis tool here.](#)

## How do I get more information on, or access to, the User Experience Questionnaire?

[You can get more information on, or access to, the User Experience Questionnaire here.](#)





For further information, please contact:

Associate Professor Libby Callaway  
T: +61 421 356 359  
E: [libby.callaway@monash.edu](mailto:libby.callaway@monash.edu)

School of Primary and Allied Health Care  
Rehabilitation Ageing and Independent Living Research Centre  
Faculty of Medicine, Nursing and Health Sciences  
Monash University, Peninsula Campus  
47-49 Moorooduc Hwy  
Frankston VIC 3199